

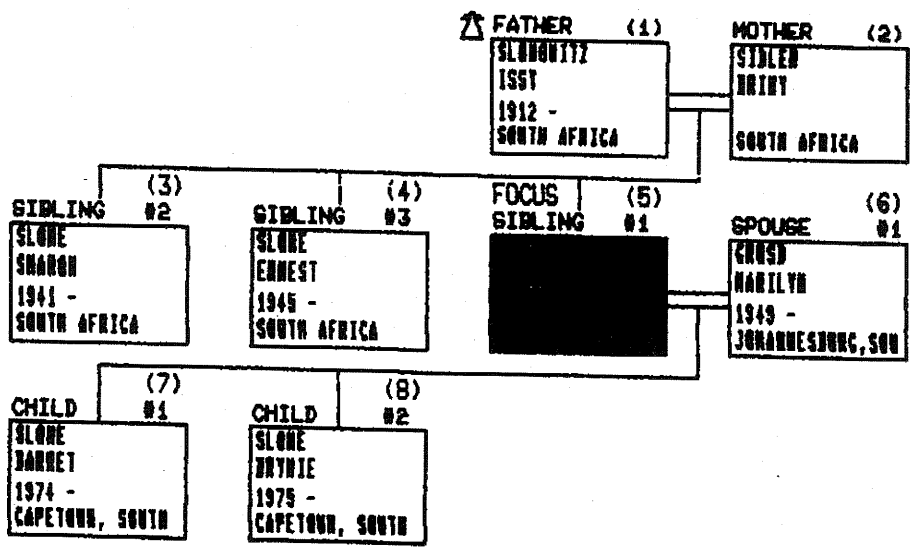
ANSEL ANTHONY SLOME
BORN 4 SEP 1939 IN BENONI, SOUTH AFRICA

MICRATED TO LOS ANCELES, USA

MARRIED
MARILYN GRUSD 14 MAR 1972 2 CHILDREN

ADDITIONAL INFORMATION
ATTORNEY B.A.L.L.B.PRETORIA
MA L.L.B CANTAB

ZELMA GENIA EPSTEIN & BELLA FINKELSTEIN
For future reference, tree no. is 154, serial no. is 03



REITH HATEFUTSOIT

THE NAHUM GOLDMANN MUSEUM OF THE JEWISH DIASPORA

JEWISH GENEALOGY CENTER

THE DESCENDANTS OF ZUNDEL SLOMOWITZ

ELMA GENIA EPSTEIN & BELLA FINKELSTEIN

REE NO. 154

ZUMBEL SLOWWITZ (1)

b. POSVEL, LITHUANIA

m. BEILA JOSSELOWITZ (2)

b. LITHUANIA

REBECCA SLOWWITZ (10)

b. POSVEL, LITHUANIA *

m. TRAUB (42)

b. LITHUANIA *

SHEPSELE TRAUB (43)

b. POSVEL, LITHUANIA *

MELVEL TRAUB (44)

b. POSVEL, LITHUANIA *

MERSHEL TRAUB (45)

b. POSVEL, LITHUANIA *

JACK SLOWWITZ (11)

b. POSVEL, LITHUANIA

d. SOUTH AFRICA 1952

m. MINNIE EDITH ATLAS (46)

b. LITHUANIA 1904

d. DURBAN, SOUTH AFRICA

CECIL SLOWE (47)

b. BLOEM FONTEIN, SOUTH AFRICA 1928

m. SHEILA KOORS (100)

b. CAPETOWN, SOUTH AFRICA 1929

RONNA SLOWE (101)

b. CAPETOWN, SOUTH AFRICA 1952

m. MAURICO HADIDA (205)

b. BUENOS AIRES, ARGENTINA 1950

MICHAEL HADIDA (206)

b. ZAFAT, ISRAEL 1979

EITAN HADIDA (207)

b. BEER SHEVA, ISRAEL 1984

JACQUELINE SLOWE (102)

b. CAPETOWN, SOUTH AFRICA 1953

a. JEFFRY SIFRIN (102S)

a. RAMI BALI (208)

b. IRAQ 1949

| NIA RAY BALI (209)

b. BEERSHEVA, ISRAEL 1985

| BANYA ZOE BALI (210)

b. BEERSHEVA, ISRAEL 1987

JONATHAN LEE SLOVE (103)

b. CAPETOWN, SOUTH AFRICA 1958

a. AMANDA HODES (211)

b. DURBAN, SOUTH AFRICA 1960

| TAL SLOVE (214)

b. KEFAR SAVA, ISRAEL 1987

BEVERLY HEIDI SLOVE (104)

b. CAPETOWN, SOUTH AFRICA 1961

a. BERNARD SPECTOR (212)

b. JOHANNESBURG, SOUTH AFRICA 1962

| ILAN SPECTOR (216)

b. NETANYA, ISRAEL 1987

ARNOLD ARNIE SLOVE (48)

b. BLOENFONTEIN, SOUTH AFRICA 1934

a. ROSALIE OPENHEIMER (105)

b. CAPETOWN, SOUTH AFRICA 1938

JACK SLOVE (106)

b. CAPETOWN, SOUTH AFRICA 1960

a. LAUREN RENE BREIDO (217)

b. JOHANNESBURG, SOUTH AFRICA 1966

MANETTE SLOVE (107)

b. CAPETOWN, SOUTH AFRICA 1963

a. LEONARD LIONEL LASER (213)

b. JOHANNESBURG, SOUTH AFRICA 1959

MARTIN SLOVE (108)

b. BLOENFONTEIN, SOUTH AFRICA 1967

SOLOMON SLOWOWITZ (3)

- b. POSVEL
- d. SOUTH AFRICA

m. CLARA FORTES (12)

- b. RUSSIA
- d. SOUTH AFRICA

MIKE SLOWE (13)

- b. CAPETOWN, SOUTH AFRICA
- d. SOUTH AFRICA

m. LILY (49)

- b. SOUTH AFRICA

SHIRLEY SLOWE (50)

- b. SOUTH AFRICA

Bennie

m. RABINOWITZ (109)

- b. CAPETOWN, SOUTH AFRICA

RABINOWITZ (110)

RABINOWITZ (111)

DAVID SLOWE (14)

- b. CAPETOWN, SOUTH AFRICA

m. BETTY (51)

- d. LONDON

ELIZABETH SLOWE (52)

LILY SLOWE (15)

- b. CAPETOWN, SOUTH AFRICA
- d. SOUTH AFRICA

m. SIDNEY SACKS (53)

- d. JOHANNESBURG

ISOBELLE SACKS (55)

- b. JOHANNESBURG

m. STEVE FRIEDLANDER (116)

- b. SOUTH AFRICA

LUCY FRIEDLANDER (117)

- b. LONDON, ENGLAND 1971

ANDREW FRIEDLANDER (118)

- b. LONDON, ENGLAND 1973

ADRIAN KAPLAN (121)
b. OREGON, U.S.A 1980

LAURA KAPLAN (120)
b. OREGON, U.S.A 1984

JAYE JEAN KAPLAN (60)
b. PORT ELIZABETH, SOUTH AFRICA 1945

n. EHUD SHLAYER (122)
b. AEULA, ISRAEL 1942

TALI SHLAYER (123)
b. JOHANNESBURG, SOUTH AFRICA 1974

AMIT SHLAYER (124)
b. JOHANNESBURG, SOUTH AFRICA 1976

Yael SHELLY SHLAYER (125)
b. HAIFA, ISRAEL 1985

PHILLIPA KAPLAN (61)
b. PORT ELIZABETH, SOUTH AFRICA 1947

n. LINDSY TALMUD (126)
b. SOUTH AFRICA

JULIE TALMUD (127)
b. LONDON, U.K. 1975

JOSHUA TALMUD (128)
b. LONDON, U.K. 1978

RUTH TALMUD (129)
b. LONDON, U.K. 1982

BERTHA SLOWOWITZ (20)
b. SOMERSET WEST, SOUTH AFRICA 1917

n. BENNIE ABRAMSON (64)
b. SOUTH AFRICA 1908
d. CAPETOWN, SOUTH AFRICA 1986

SHIELA JOY ABRAMSON (65)
b. CAPETOWN, SOUTH AFRICA 1944

n. BASIL ALAN SACKS (130)
b. CAPETOWN, SOUTH AFRICA 1943

SHAWN SACKS (131)
b. CAPETOWN, SOUTH AFRICA 1969

DAVID SACKS (132)
b. CAPETOWN, SOUTH AFRICA 1972

JULIAN IVOR ABRAMSON (66)
b. CAPETOWN, SOUTH AFRICA 1948

m. JESSIE KENNEDY (133)
b. 1948

GARETH CRAIG PATRICK ABRAMSON (134)
b. CAPETOWN, SOUTH AFRICA 1982

MICHAEL JAMES EDWARD ABRAMSON (135)
b. CAPETOWN, SOUTH AFRICA 1984

CECIL SLOVE (21)
b. SOUTH AFRICA 1921
d. NORTH CAROLINA, USA

m. BERYL ABRAMS (67)
b. VREDEFORT DISTRICT, SOUTH AFRICA 1924

LYN SLOVE (68)
b. DURBAN, SOUTH AFRICA 1950

SHAWN LEX SLOVE (69)
b. DURBAN, SOUTH AFRICA 1953

m. GARRETT (69S)

SALLY BRYNA SLOVE (70)
b. DURBAN, SOUTH AFRICA 1958

LEE RICKY SLOVE (71)
b. JERUSALEM, ISRAEL 1960

NOISCHE SLOWOWITZ (4)
b. POSVEL, LITHUANIA *

m. (22)
b. LITHUANIA *

SLOWOWITZ (23)
b. LITHUANIA *

SLOWOWITZ (24)
b. LITHUANIA *

ITA SLOWOWITZ (5)
b. POSVEL, LITHUANIA *

m. DWORSKY (25)

b. ROGOWA, LITHUANIA *

| NACHUM DWORSKY (26)

| DWORSKY (27)

| DWORSKY (28)

LEVA SLOWWITZ (8)

b. POSVEL *

m. JULY JULIUS SHILANSKY (38)

b. LITHUANIA *

| BLUMA SHILANSKY (39)

b. KOVNO *

| BELLA SHILANSKY (40)

b. KOVNO *

CHAYIM SLOWWITZ (9)

b. POSVEL *

m. RAYA (41)

JOSEPH SLOWWITZ (6)

b. POSVEL, LITHUANIA 1879

d. VEREENIGING, SOUTH AFRICA 1956 *Apr. 77*

Pasvalys Ponaves

m. SARAH LIEBERMAN (29) *b. Utan 1889*

d. JOHANNESBURG *1952 Apr. 93*

| HARRY SLOWWITZ (30)

b. JOHANNESBURG, SOUTH AFRICA 1908

m. BECKY ZANGWILL (72)

b. KROONSTAD, SOUTH AFRICA 1909

d. 1979

| MIRIAM SLOWWITZ (73)

b. SOUTH AFRICA *1939*

m. ILANA ZYGELBAUM (136)

b. 1964

| MESSIE SLOWWITZ (137)

b. JOHANNESBURG, SOUTH AFRICA 1967

| JUDITH SLOWWITZ (138)

b. JOHANNESBURG, SOUTH AFRICA 1968

DANIELLA SLOWOWITZ (139)
b. JOHANNESBURG, SOUTH AFRICA 1969

a. TANA ASSAEL (140)
b. 1934

SUBAR AMUSHKA SLOWOWITZ (74)
b. SOUTH AFRICA 1943

a. ANTHONY COHEN (141)
b. JOHANNESBURG, SOUTH AFRICA 1940

JODY COHEN (142)
b. JOHANNESBURG, SOUTH AFRICA 1967

JENNI COHEN (143)
b. JOHANNESBURG, SOUTH AFRICA 1970

ROBYN COHEN (144)
b. JOHANNESBURG, SOUTH AFRICA 1974

WILLIAM GEORGE SLOWOWITZ (31)
b. SOUTH AFRICA 1910
d. VEREENIGING, SOUTH AFRICA 1978

a. EDA ZADKIN (75)
b. SOUTH AFRICA
d. VEREENIGING, SOUTH AFRICA

ALAN SLOWOWITZ (76)
b. SOUTH AFRICA 1950

a. (76S)

SNEHA SLOWOWITZ (77)
b. SOUTH AFRICA 1951

ISSY SLOWOWITZ (33)
b. SOUTH AFRICA 1912 *Clonlan Orange Fra State*
d. SOUTH AFRICA *JHB 1981*

a. BRINY SIDLER (82)
b. SOUTH AFRICA *Jan 4 1914*
d. BENONI, SOUTH AFRICA *Nov 7 1961*

ANSEL ANTHONY SLOWE (83)
b. BENONI, SOUTH AFRICA 1939 *Sept 4 1939*

a. MARILYN GRUSD (157)
b. JOHANNESBURG, SOUTH AFRICA 1949

BARRET SLOWE (158)
b. CAPETOWN, SOUTH AFRICA 1974

BRYNIE SLOWE (159)
b. CAPETOWN, SOUTH AFRICA 1975

SHARON SLOWE (84)
b. SOUTH AFRICA 1941

c. Ariana Frelich Slome October 1992

m. THEODOR ARONSON (160)
b. 1936

ARONSON BRIAN (161)
b. 1966

PETER ARONSON (162)
b. 1967

ERNEST SLOWE (85)
b. SOUTH AFRICA 1945

m. LINDA PRAG (163)
b. JOHANNESBURG, SOUTH AFRICA 1949

BEVERLY SLOWE (164)
b. 1978

BRIAN SLOWE (165)
b. 1979

ISSEL SLOWE (166)
b. 1983

m. MIRIAM SONNABEND (167)

BELLA SLOWOWITZ (32)
b. CLOCOLAN ORANGE, SOUTH AFRICA 1917

m. MORRIS ISIDORE FINKELSTEIN (78)
b. JOHANNESBURG, SOUTH AFRICA 1910

SANDRA NICHELLE FINKELSTEIN (79)
b. SOUTH AFRICA 1940

m. DENNIS HUGH BROWN (145)
b. JOHANNESBURG, SOUTH AFRICA 1931

JARRET DEVAN BROWN (146)
b. JOHANNESBURG, SOUTH AFRICA 1959

LAWRENCE BARRY BROWN (147)
b. JOHANNESBURG, SOUTH AFRICA 1961

IAN BRYAN BROWN (148)
b. JOHANNESBURG, SOUTH AFRICA 1964

HARVEY BERTRAM BROWN (149)
b. JOHANNESBURG, SOUTH AFRICA 1966

STANLEY FINKELSTEIN (80)
b. JOHANNESBURG, SOUTH AFRICA 1941

a. ELAINE GESHEN (150)
b. JOHANNESBURG, SOUTH AFRICA 1946

MELISSA ANN FINKELSTEIN (151)
b. DURBAN, SOUTH AFRICA 1967

DEBORAH BEBBIE FINKELSTEIN (152)
b. DURBAN, SOUTH AFRICA 1969

BRIGID FINKELSTEIN (153)
b. DURBAN, SOUTH AFRICA 1971

LYNN FINKELSTEIN (81)
b. JOHANNESBURG, SOUTH AFRICA 1947

a. LAURENCE POHL (154)
b. 1944

MARC ANDREW POHL (155)
b. JOHANNESBURG, SOUTH AFRICA 1971

JONATHAN LANCE POHL (156)
b. JOHANNESBURG, SOUTH AFRICA 1973

SYBIL LILY SLOWOWITZ (34)
b. LADYBRAND ORANGE FREE STATE, S.A. 1921

a. HORACE GEORGE BEHRMAN (86)
b. JOHANNESBURG, SOUTH AFRICA 1913
d. JOHANNESBURG, SOUTH AFRICA 1973

SHERRY MARCIA BEHRMAN (87)
b. JOHANNESBURG S.A 1946

a. ROBERT SHMUEL DAVIS (168)
b. JOHANNESBURG, SOUTH AFRICA 1944

KAEREN DANIELLA DAVIS (169)
b. JOHANNESBURG, SOUTH AFRICA 1969

GEN 1 | GEN 2 | GEN 3 | GEN 4 | GEN 5 | GEN 6 | GEN 7 | GEN 8 | GEN 9 | GEN 10 | GEN 11 | GEN 12 | GEN 13 | GEN 14 | GEN 15 |

ROMY ANDREA DAVIS (170)
b. JOHANNESBURG, SOUTH AFRICA 1971

ITZIVIA JENNI DAVIS (171)
b. JOHANNESBURG, SOUTH AFRICA 1974

CELESTE BERMAN (88)
b. JOHANNESBURG, S.A 1949

a. ELWYN SOSNOVIK (172)
b. JOHANNESBURG, SOUTH AFRICA 1936

HAYLEY GILA SOSNOVIK (173)
b. JOHANNESBURG, SOUTH AFRICA 1978

AMANDA LOREN SOSNOVIK (174)
b. JOHANNESBURG, SOUTH AFRICA 1980

CHERYL ADRIENNE SOSNOVIK (175)
b. JOHANNESBURG, SOUTH AFRICA 1984

CHAYIM MIRACHEN BERMAN (89)
b. JOHANNESBURG, S.A 1953

a. BRACHA BIBER (176)
b. SAINT PAUL, MINISSOTA, USA 1955

ZVI GERSON BERMAN (177)
b. ISRAEL 1978

YECHESKIEL AVRAHAM BERMAN (178)
b. 1979

YERUBA ZEEV BERMAN (179)
b. ISRAEL 1981

ITZCHAK MEIR BERMAN (180)
b. ISRAEL 1985

NOACH SLOME (7)
b. POSVEL 1880
d. JOHANNESBURG, SOUTH AFRICA 1952

a. LUBA MARGOLIUS (35)
b. PONEVEZ, LITHUANIA 1895
d. JOHANNESBURG, SOUTH AFRICA 1960

BENNIE BENJAMIN SLOME (36)
b. ROSTOV DON RUSSIA 1920
d. SOUTH AFRICA 1987

- a. JOY ELINOR KAPLAN (90)
 b. JOHANNESBURG, SOUTH AFRICA 1925
- RENEE ABELE SLOME (91)
 b. JOHANNESBURG, S.A 1945
- a. NORMAN NAETOLE SUPER (181)
 b. JOHANNESBURG, S.A. 1936
- SHANNON SUPER (182)
 b. JOHANNESBURG, S.A 1967
- LEANNE SUPER (183)
 b. JOHANNESBURG, SOUTH AFRICA 1968
- NEAL DAVID SUPER (184)
 b. JOHANNESBURG, SOUTH AFRICA 1971
- MELANIE SUPER (185)
 b. JOHANNESBURG, SOUTH AFRICA 1973
- LORRAINE INGRID SLOME (92)
 b. JOHANNESBURG, S.A 1947
- a. PAUL HENRY TOPOL (186)
 b. LONDON, ENGLAND 1943
- CAREN LEE TOPOL (187)
 b. JOHANNESBURG, S.A. 1971
- SHERYL MARION TOPOL (188)
 b. JOHANNESBURG, S.A. 1974
- IAN HILTON SLOME (93)
 b. JOHANNESBURG, SOUTH AFRICA 1952
- a. HANON ZELDA MENDES DE COSTA (189)
 b. ENGLAND 1953
- IMOGEN MENDES SLOME (190)
 b. LONDON, ENGLAND 1983
- GABRIELLE MENDES SLOME (191)
 b. NEW YORK, USA 1986
- a. SYLVIA WILLIAMS (94)
 b. LONDON, ENGLAND 1929
- ZELMA GENIA SLOME (37)
 b. PONEVEZ, LITHUANIA 1923

Benjamin

a. JACK EPSTEIN (95)
b. VILNA, POLAND 1908

AVRILLE MARION EPSTEIN (96)
b. JOHANNESBURG, S.A 1947

a. AVRON HENRY MOSS (192)
b. JOHANNESBURG, SOUTH AFRICA 1945

BEBBIE LEE MOSS (193)
b. JOHANNESBURG, SOUTH AFRICA 1969

DAVID NEIL MOSS (194)
b. JOHANNESBURG, SOUTH AFRICA 1974

LENNIE SAUL MOSS (195)
b. JOHANNESBURG, SOUTH AFRICA 1976

ALAN MICHAEL EPSTEIN (97)
b. JOHANNESBURG, S.A 1949

a. EDNA SHULAMIT NEUMANN (196)
b. RAMAT HATAYASIM, ISRAEL 1950

GILAD DAVID EPSTEIN (197)
b. JOHANNESBURG, SOUTH AFRICA 1972

DAN SHIMRON EPSTEIN (198)
b. JOHANNESBURG, SOUTH AFRICA 1976

MICHAEL EPSTEIN (199)
b. PETAH TIKVA, ISRAEL 1982

HELENE SONIA EPSTEIN (98)
b. JOHANNESBURG, S.A 1955

a. DAVID CVI MARESKY (200)
b. VANDERBIJL PARK, SOUTH AFRICA 1953

HILLEL SABEL MARESKY (201)
b. TORONTO, ONTARIO 1981

LANCE HADAR ISOR MARESKY (2011)
b. TORONTO, CANADA 1984

JOCELYN YETTA EPSTEIN (99)
b. JOHANNESBURG, S.A 1956

a. LEON JOEL KADISH (202)
b. BELLVILLE CAPE, SOUTH AFRICA 1955

| GEN 1 | GEN 2 | GEN 3 | GEN 4 | GEN 5 | GEN 6 | GEN 7 | GEN 8 | GEN 9 | GEN 10 | GEN 11 | GEN 12 | GEN 13 | GEN 14 | GEN 15 |

LISA KADISH (203)
b. CAPETOWN, SOUTH AERICA 1980

SETH KADISH (204)
b. TORONTO, CANADA 1983

NOAH MARK KADISH (218)
b. TORANTO, CANADA 1987